



10Gb Trunking

What it is:

The QLogic SANbox 5000 series switches feature four 10Gb stacking ports for expansion and high performance trunking of multiple switches.

How it works:

Each 10Gb trunk equals the performance of six 2Gb links. In addition, adaptive trunking automatically spreads the I/O operations across multiple trunks – even fabric wide. To minimize congestion caused by mixed device speeds, each trunk also includes intelligent lane selection.

How competitive solutions work:

McData and Brocade use proprietary trunking methods that are prone to data loss. In addition, these features are limited in bandwidth and cannot reach the trunking capability of the QLogic 48Gb, consume valuable ports for connection trunks, and incur additional license fees which create further management complexity.

The user benefit:

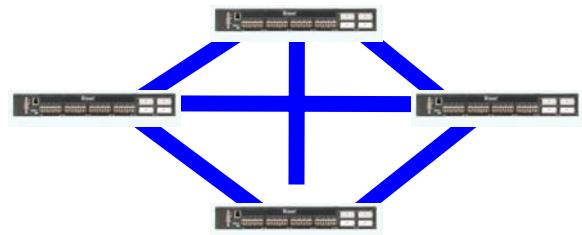
Customers can scale their fabrics and maintain high performance using automated, self-configuring trunk ports. No complex trunk configurations or multiple ISL links to manage.

QLogic 64 Port Stack

4 Switches

6 Cables

Automated, Self-Configuring Trunks



Competitive 64 Port Mesh

6 Switches

20 Cables

8 Manually Configured Trunks

