



iSCSI HBA Tools

Consistent Interface and Tools for Every Operating System

Industry Challenge

iSCSI implementations began with software initiators, forcing IT managers to learn a new set of tools for each operating system (OS). In addition, different hardware combinations using a NIC or generic TOE made the job even more difficult. This made iSCSI difficult to manage despite the ubiquity of Ethernet and its inherent cost advantages.

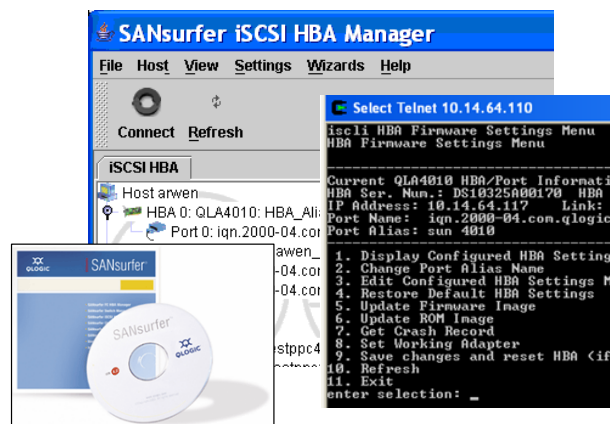
iSCSI HBA Solution

QLogic's hardware-based iSCSI HBAs are supported by all major operating systems and appear to the OS as storage adapters, enabling IT managers to use existing management tools and procedures for installation and maintenance. Competing software initiators and TOE solutions rely on new software layers that require the IT manager to learn a new procedure for each operating system implementation and hardware combination.

User Benefits:

- **Lower Cost of Ownership** – Reduces training and maintenance costs by eliminating the need to use and maintain multiple management software and tools.
- **Ease of Use** – QLogic's SANsurfer® iSCSI HBA Manager works across operating systems to provide a consistent, easy to learn and use interface.

QLogic Way: One GUI, CLI Interface across all Operating Systems



How QLogic's iSCSI Solution Works

QLogic's iSCSI HBAs implement a storage adapter interface to the host OS. When installed they will appear as a SCSI adapter rather than an Ethernet adapter. In addition, QLogic's SANsurfer® management tool allows IT manager's to control every detail of their iSCSI HBAs from a central application running on varied operating systems.