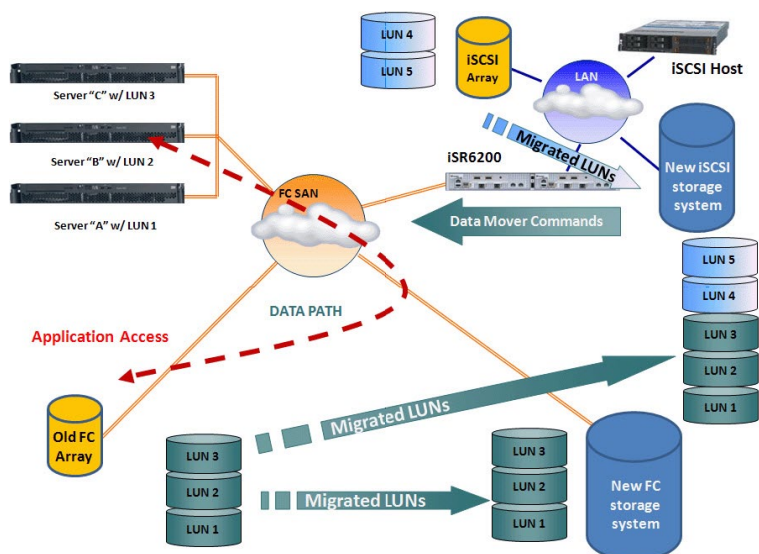


Data Migration for iSR

Providing Greater Storage Agility, Simplicity, Security, and Availability

Overview

As mid-range and enterprise businesses grow and deploy physical and virtual servers and storage arrays, the amount of data that they are required to manage, share, and protect continues to increase. This growth places pressure on CIOs to adopt a data quality framework to preserve data integrity. At the same time, they must cope with end-of-life and leased storage systems, technology transitions, mergers and acquisitions, tiered storage strategies, virtualization-driven server consolidation, storage consolidation, and new storage implementation.



Highlights

Benefits

- Enterprise-class data integrity
- Proven SAN technology
- Ease-of-use migration
- Investment protection
- Data security and protection
- Scalable performance to meet service level agreement (SLA) requirements
- Open SAN fabric and multi-protocol support
- Online migration provides minimal downtime

Features

- Heterogeneous array support
- Fibre Channel SAN vendor independent
- Block-based data migration
- Up to 4TB/hr per blade
- Flexible scheduling of data migration jobs
- Data migration service logs
- Eight active user-defined groups
- Per-TB or array-based licensing
- Data verification option
- Array bandwidth throttling

The QLogic Solution

To ensure that IT investments count in this highly competitive business environment, QLogic® provides a solution that can help secure data while quickly migrating to new systems in a simple, cost-effective manner. The iSR6000 multifunction router enables both online and offline data migration between heterogeneous storage arrays. The iSR6000 Series extends enterprise storage arrays by adding multi-protocol support without requiring separate storage arrays or additional management costs. These routers enable modular, multi-protocol SAN designs with increased scalability, stability, return on investment (ROI), and simpler-to-manage storage solutions for virtualized server environments.

Heterogeneous Data Migration

Because data centers are different, your data migration solution must provide heterogeneous migration across arrays, applications, and operating systems. The data migration solution is based on the QLogic intelligent Storage Router and iSR data migration technology that enables low-cost data migration across heterogeneous Fibre Channel and iSCSI SANs.

Cost-Effective Data Migration

The QLogic data migration solution reduces the cost of data migration. This solution sets a new price and performance benchmark and offers a simple licensing model to meet the business and operational demands of every IT department.

Flexible Migration Models

The QLogic data migration solution provides flexible migration capabilities, migration job scheduling, job prioritization, secure erase, job sequencing, and migration transfers based on server grouping. Data migration from QLogic reduces downtime by allowing the complete setup and configuration of data migration jobs (except for immediate scheduling of the jobs) without bringing down other applications.

Enterprise-Class Data Integrity

Based on QLogic's proven router technology, the QLogic data migration solution offers the highest level of data integrity by verifying every transfer with CRCs during transfer, and the option to perform byte-for-byte comparisons upon completion.

Preparing the Business to Support the Future

Data mining, business analytics, business intelligence, disaster recovery strategies, and metadata management continue to fuel the demand for data migration technology. The iSR6000 family and data migration enables you to migrate your data at a very high speed between heterogeneous storage arrays using a user-friendly data migration GUI or CLI.

When you want to make your IT investment count in a highly competitive business environment, you need a simple and cost-effective solution that can help secure your data while quickly migrating to new systems.

QLogic data migration for iSR: Preparing you to support the future!

Supported Source Arrays**Dell®**

- Compellent, Fibre Channel array
- EqualLogic™ PS Series (iSCSI)

EMC®

- AX (Fibre Channel and iSCSI versions)
- CX Series (CX, CX3, CX4)
- DMX, VMAX

HDS

- DF700
- 9500
- Lightening 9900™
- Adaptable Modular Storage family (AMS)
- Universal Storage Platform (USP) V

HP

- MSA1000, 1500, 2000
- EVA4000, 5000, 6000, 8000
- XP Family
- P4000 (offline migration only)
- 3PAR®

IBM®

- DS3000, DS4000, DS5000, DS6000, DS8000
- SAN Volume Controller (SVC)
- XIV®

NEC®

- D-Series SAN Storage arrays

NetApp®

- FAS Series (Fibre Channel)

Xiotech®

- Emprise™ Storage family
- Magnitude 3D® 4000 family

Supported SAN Fabrics**Fibre Channel SAN**

- QLogic, Brocade®, Cisco®, McDATA®

iSCSI SAN

- 1GbE and 10GbE protocols

Migration Protocols**Fibre Channel**

- 2Gb, 4Gb, 8Gb

iSCSI

- 1GbE, 10GbE

Migration Jobs

- 255 active jobs
- Support for 1,024 LUNs per blade
- Eight active job groups
- Scheduling
- Verify mode
- Server groups
- Incremental migrations
- One-to-many migrations
- Many-to-one migrations

License Models**Per Terabyte (TB) Licenses**

- 5TB license
- 10TB license
- 50TB license

Per-Array Licenses

- Single-array license:
 - Provides unlimited data migration for a specific array
 - Many sources to one target
 - One source to many targets

Migration Performance

- Up to 4TB per hour, one blade
- Up to 8TB per hour, two blades
- Array bandwidth throttling:
 - Protects application and server performance by not overloading the array with migration jobs
- Multipathing and load balancing

Migration Schedule Options

- Start now
- Schedule for later (date and time)
- Serial schedule jobs:
 - Configure multiple jobs
- Configuration only:
 - Configure offline migration without bringing down the application

Supported Operating Systems

- Windows® 2003, 2008
- Linux® (Red Hat® and SUSE®)
- VMware®
- HP-UX
- Solaris®
- IBM AIX
- Other support:
 - Cluster
 - Native and Veritas™ Volume Manager



Corporate Headquarters QLogic Corporation 26650 Aliso Viejo Parkway Aliso Viejo, CA 92656 949-389-6000 www.qlogic.com
 International Offices UK | Ireland | Germany | France | India | Japan | China | Hong Kong | Singapore | Taiwan

© 2011 QLogic Corporation. Specifications are subject to change without notice. All rights reserved worldwide. QLogic and the QLogic logo are trademarks of QLogic Corporation. 3PAR is a registered trademark of 3PAR, Inc. Brocade is a registered trademark of Brocade Communications Systems, Inc. Cisco is a registered trademark of Cisco Systems, Inc. Dell and EqualLogic are trademarks or registered trademarks of Dell Inc. EMC is a registered trademark of EMC Corporation. HP is a registered trademark of Hewlett-Packard Company. IBM is a registered trademark of International Business Machines Corporation. Linux is a registered trademark of Linus Torvalds. McDATA is a registered trademark of McDATA Corporation. NEC is a registered trademark of NEC Corporation. NetApp is a registered trademark of Network Appliance, Inc. Red Hat is a registered trademark of Red Hat, Inc. Solaris is a registered trademark of Sun Microsystems, Inc. SUSE is a registered trademark of Novell, Inc. Veritas is a trademark of Symantec Corporation. VMware is a registered trademark of VMware, Inc. Windows is a registered trademark of Microsoft Corporation. Xitech is a registered trademarks of Xitech Corporation. All other brand and product names are trademarks or registered trademarks of their respective owners. Information supplied by QLogic Corporation is believed to be accurate and reliable. QLogic Corporation assumes no responsibility for any errors in this brochure. QLogic Corporation reserves the right, without notice, to make changes in product design or specifications.